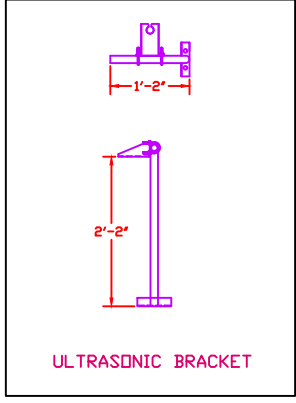
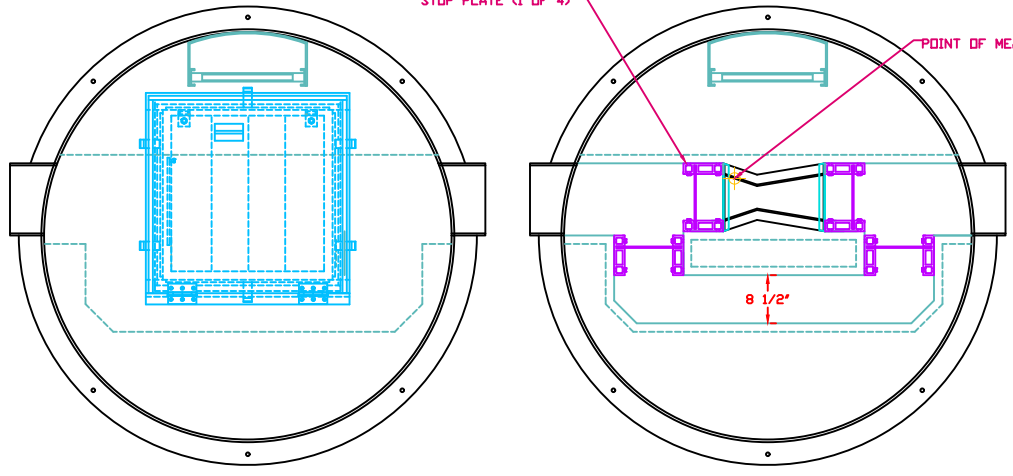
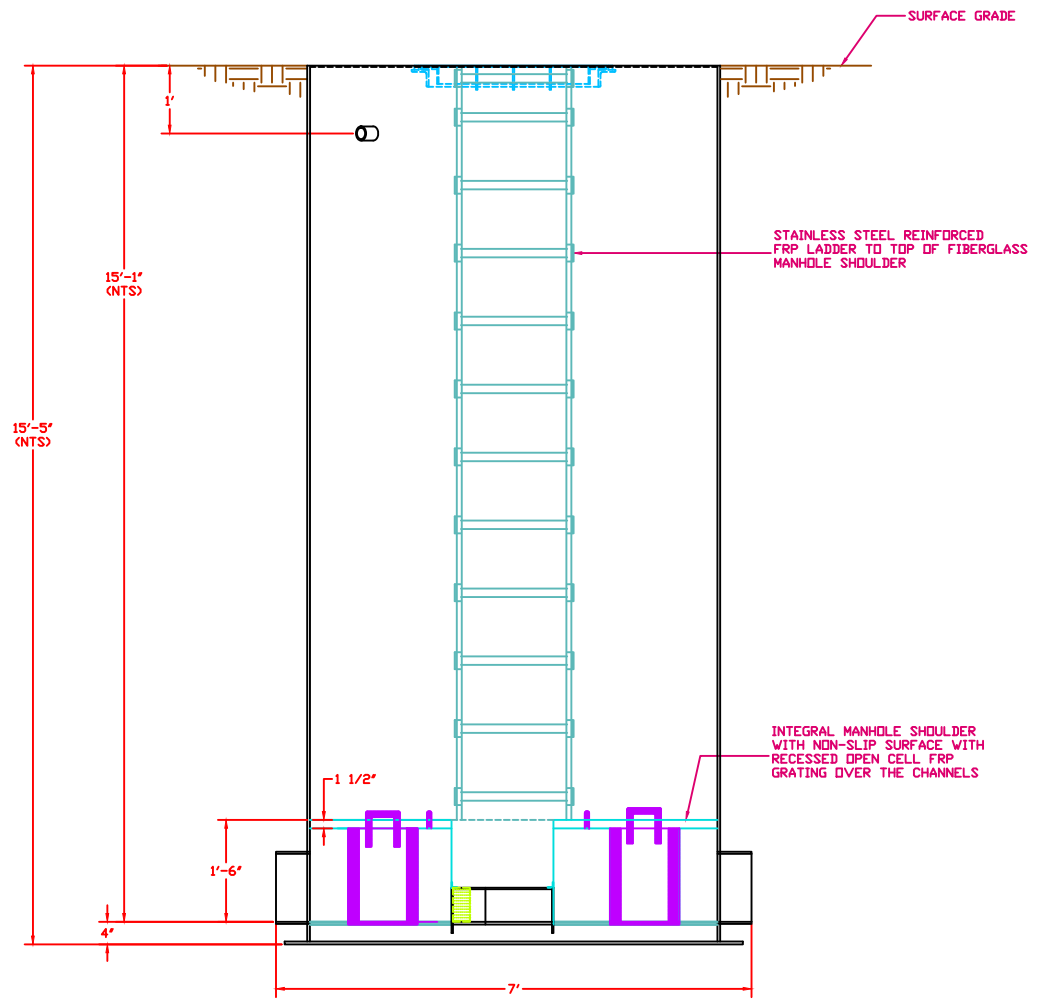


METER: ULTRASONIC  
 CONNECTION: 12" DIA. C.I./PVC PIPE

ACCESSORIES:  
 INTEGRAL FRP MANHOLE SHOULDER  
 FRP GRATING OVER CHANNEL  
 SURFACE MOUNT FRP STOP GATES  
 FRP BYPASS CHANNEL  
 ULTRASONIC BRACKET - FIXED  
 STAFF GAUGE - MOLDED, 1/100'S



PLAN VIEW  
 (RECESSED FRP GRATING NOT SHOWN)



ELEVATION VIEW

- 1) FLOW IS FROM LEFT TO RIGHT
- 2) FLEXIBLE PVC BOOTS WITH STAINLESS STEEL CLAMPS PROVIDED

<b>TRACOM</b> FIBERGLASS PRODUCTS	PACKAGED METERING MANHOLE, 72" DIAMETER, WITH DOME TOP, 18X4 CUTTHROAT FLUME, BYPASS CHANNEL, 12" PIPE STUBS, INTEGRAL FRP SHOULDER, FIXED ULTRASONIC, STAFF GAUGE	
	DWG. NO. MH-72-D-CT18X4-P12-ER-USR-BYPASS	REV 0
PROJECT	TDMA - REFERENCE DRAWING	DATE 11/13/20