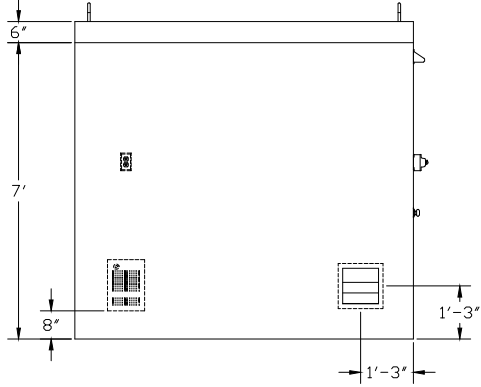
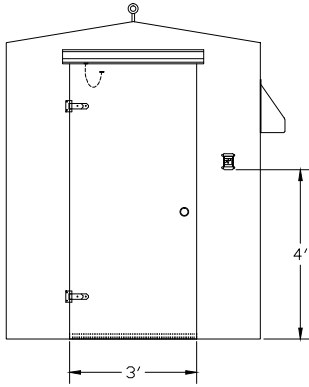


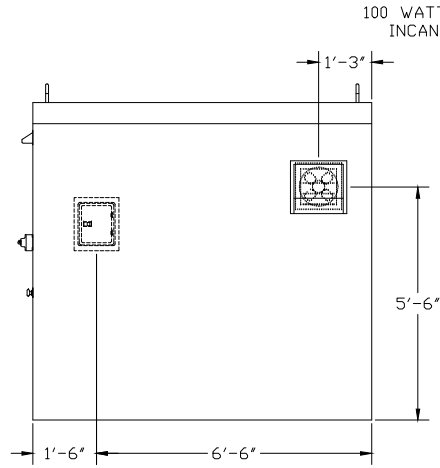
| | |
|--------------------------------------|---|
| EXTERIOR COLOR: #2445 GRAY CLOUD | LOAD CENTER: 125 A, ML, 120/240 VAC, 1P |
| INTERIOR COLOR: #2445 GRAY CLOUD | NEMA 1 - SIEMENS E08ML1125AS |
| INSULATION: 1" (R~7) | LIGHT: 100 WATT - M 14915K54 |
| DOOR HDR: SCHLAGE SS CLASSROOM STYLE | FAN: 585 CFM - G 1HLA1 |
| SS STRAP HINGES | SHUTTER: 10" X 10" - G 5C210 |
| SS SPRING CUSHIONED CRASH STOP | HEATER: 1500 WATT - G 5ZK68 & G5ZK72 |
| ACCESSORIES: NONE | OUTLET: GFCI - LEVITON |



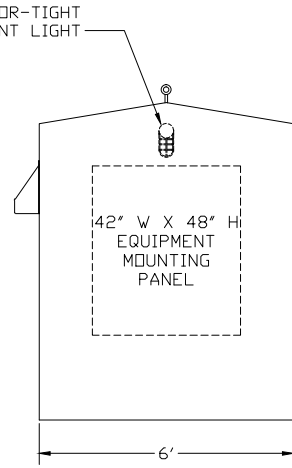
LEFT ELEVATION



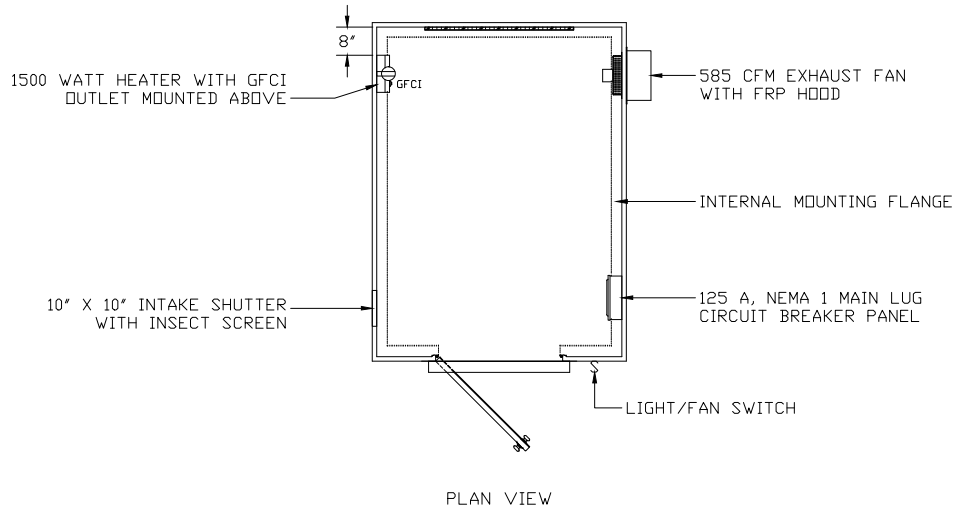
FRONT ELEVATION



RIGHT ELEVATION



REAR ELEVATION



PLAN VIEW

1) ANCHOR BOLTS BY OTHERS

| | | |
|--------------------------------------|---|-------------|
| TRACOM FIBERGLASS PRODUCTS | ONE-PIECE FRP BUILDING, 6'-0" W X 8'-0" D X 7'-6" H WITH STANDARD ACCESSORIES PACKAGE | |
| | DWG. NO. OPB-72-96-90-01 | REV 0 |
| PROJECT | STANDARD BUILDING SIZE | DATE 5/8/07 |