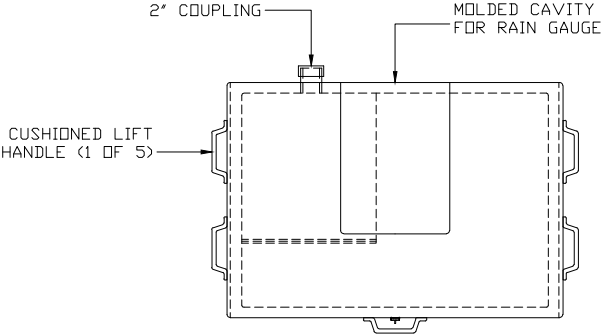
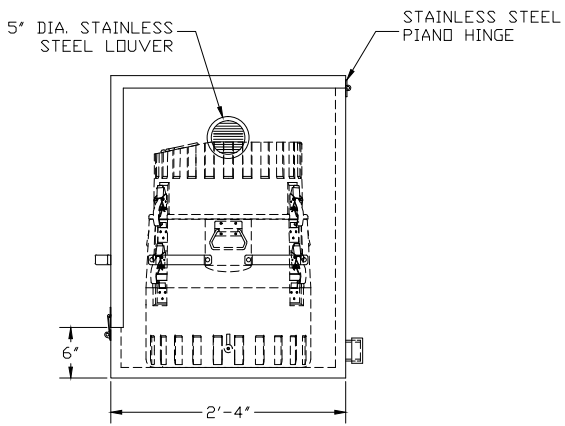
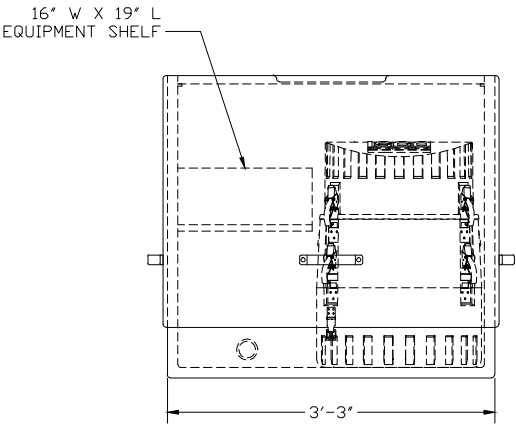
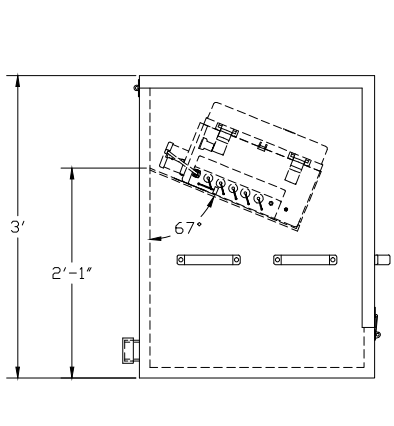



EXTERIOR COLOR: #1540 PURE WHITE	HDR: SS HASP - M 1304A24
INTERIOR COLOR: #1540 PURE WHITE	SS PIANO HINGE - M 1582A115
INSULATION: 1" (R~7)	(5) LIFT HANDLES - M 13665A27
ACCESSORIES: 2" COUPLING	(2) SELF-LOCKING SUPPORT ARMS
16" W X 19" L SHELF	
5" DIA. SS LOUVER	



- 1) INTEGRAL FLOOR
- 2) SELF-LOCKING DOOR SUPPORT ARMS NOT SHOWN FOR CLARITY
- 3) 16" W X 19" L EQUIPMENT SHELF
- 4) ISCO 4200 FLOW METER AND 6712 FULL-SIZED PORTABLE SAMPLER
- 5) NOT ALL EQUIPMENT SHOWN IN ALL VIEWS

 FIBERGLASS PRODUCTS	MODEL 200-071 ENCLOSURE, 39" W X 28" D X 36" H, WITH PURE WHITE GEL COAT, 2" COUPLING, 5" DIA. STAINLESS STEEL LOUVER, AND EQUIPMENT SHELF	
	DWG. NO. ENCL-200-071-06	REV 3
PROJECT U.S. DEPARTMENT OF ENERGY - ROCK FLATS ROCKY FLATS, CO	DATE 4/2/03	